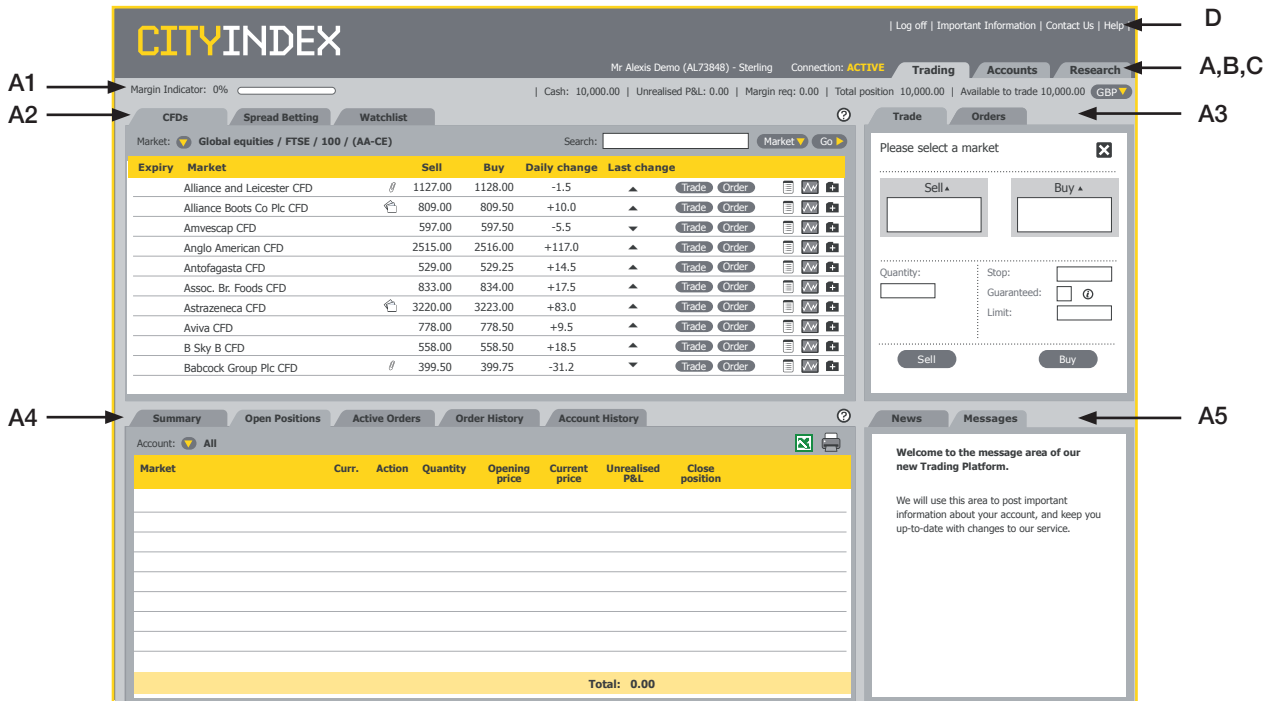


Trading Platform Guide

Contents

	Page Number
Trading Platform Overview _____	2
Using the Platform _____	3
A. Trading tab _____	3
1. Margin indicator and account summary strip _____	3
2. Markets section _____	3
Searching for markets _____	3
Managing Watchlists _____	5
3. Deal ticket _____	6
Placing a Trade _____	6
Closing a Trade _____	7
Placing an Order _____	8
Order types _____	12
4. Portfolio section _____	12
Summary _____	15
Open Positions _____	15
Active Orders _____	16
Order History _____	17
Account History _____	17
B. Account tab _____	17
C. Research tab _____	17

Trading Platform Overview



Key

A. Trading tab: incorporates all the trading functionality available to you

A1 Margin indicator and summary strip • Quick glance overview of your account status

A2 Markets section • View and search for markets
• Add markets to your Watchlist.

A3 Deal ticket • Place Trades
• Place new Orders

A4 Portfolio section Gives you access to the:

- Summary tab
- Open Positions tab
- Active Orders tab
- Order History tab
- Account History tab

A5 News and Messages tabs • News feed from Dow Jones
• Any messages from us

B. Account tab: enables you to fund your account and manage your personal information online

C. Research tab: gives you access to the research tools

D. Additional links: gives you quick access to documentation

Important Information Access to pdf documentation that can be printed: Terms and Market Information Sheets

Contact Us Our contact details

Help Access to pdf documentation of our Help guides

Using the Platform

A. Trading Tab

When you logon to your account you will land on the Trading Tab view.

1. Margin indicator and account summary strip



This section allows you to view your available margin and account summary at a glance.

- Cash: is the total cash equity deposited into the account. e.g. 10,000 has been deposited in this account. If there were no Open Positions this figure would also be seen in Total position and Available to trade.
- Unrealised P&L: is the sum of profits/losses across all Open Positions
- Margin req: is the deposit needed in respect of each Open Position on your account.
- Total position: is the trading resources available to you to trade
- Available to trade: is the measure of funds that you have available to trade

Please note, if the figure in the Total position and Available to trade is negative, then your account is referred to as being 'on margin call'. A margin call is a call from the margin department for further funds to be deposited into the account to support additional exposure from running losses.

The currency dropdown allows you to convert the details shown in the strip into the equivalent currency chosen.

2. Markets section

This section allows you to search for markets to place Trades or Orders and create and manage your Watchlists.

Searching for markets

Markets can be found by:

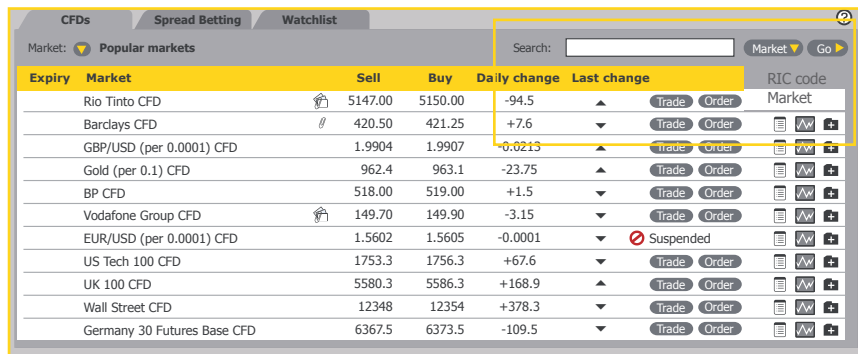
Navigating to the relevant category

Using the dropdown menu system near the top of the page you are able to find the market you are interested in by selecting the category of instrument it fits into such as Indices, Shares, Commodities etc. A list of our most popular markets is within the Popular dropdown menu.

Expiry	Popular market	Sell	Buy	Daily change	Last change			
	Indices	1127.00	1128.00	-1.5	▲	Trade Order Watchlist		
	Shares	UK	Popular	809.50	+10.0	▲	Trade Order Watchlist	
	Currencies	US	All	A to E	A	5	▼	Trade Order Watchlist
	Commodities	Europe		F to J	B	7.0	▲	Trade Order Watchlist
	Bonds	Asia		K to Q	C	1.5	▲	Trade Order Watchlist
	Interest Rates			P to T	D	1.5	▲	Trade Order Watchlist
	Astrazeneca CFD	3220.00		U to Z	E	1.0	▲	Trade Order Watchlist
	Aviva CFD	778.00	778.50	+9.5	▲	▲	Trade Order Watchlist	
	B Sky B CFD	558.00	558.50	+18.5	▲	▲	Trade Order Watchlist	
	Babcock Group Plc CFD	399.50	399.75	-31.2	▼	▼	Trade Order Watchlist	

Using the search function

You can search for a market by entering a minimum of three characters in the Search box. Choose whether you would like to search by name of the market or RIC and press Go.



Expiry	Market	Sell	Buy	Daily change	Last change	RIC code
	Rio Tinto CFD	5147.00	5150.00	-94.5	▲	Market
	Barclays CFD	420.50	421.25	+7.6	▼	Market
	GBP/USD (per 0.0001) CFD	1.9904	1.9907	-0.0215	▲	Market
	Gold (per 0.1) CFD	962.4	963.1	-23.75	▲	Market
	BP CFD	518.00	519.00	+1.5	▼	Market
	Vodafone Group CFD	149.70	149.90	-3.15	▼	Market
	EUR/USD (per 0.0001) CFD	1.5602	1.5605	-0.0001	▼	Suspended
	US Tech 100 CFD	1753.3	1756.3	+67.6	▼	Market
	UK 100 CFD	5580.3	5586.3	+168.9	▲	Market
	Wall Street CFD	12348	12354	+378.3	▼	Market
	Germany 30 Futures Base CFD	6367.5	6373.5	-109.5	▼	Market

Using the column sort function

Sort the markets into ascending or descending order by clicking on the Market column.

Tip

Tailor the size of the split screens using the icon between the Market and Portfolio section.

Key to icons



Position on a market.

This shows that you currently have an Open Position on this market. The position can be seen in the Open Positions tab.



Order attached to a market.

This shows that you currently have an Opening Order waiting to be triggered on this market. This Order can be seen in the Active Orders tab.



Position and Order attached to a market.

This shows that you currently have an Open Position with Order(s) attached on this market. The position can be seen in the Open Positions tab. The Order(s) can be seen in the Active Orders tab.



View market information.

View more information about the market by clicking on the market information icon. This will open a popup with more details about that market.



View tick chart.

View charts by clicking on the graph icon. This will open a popup with a historical chart of the market.



Add to Watchlist.

Add markets to your own Watchlist by clicking on this icon. See more on Watchlists below.



Remove markets from your Watchlist by clicking on this icon.

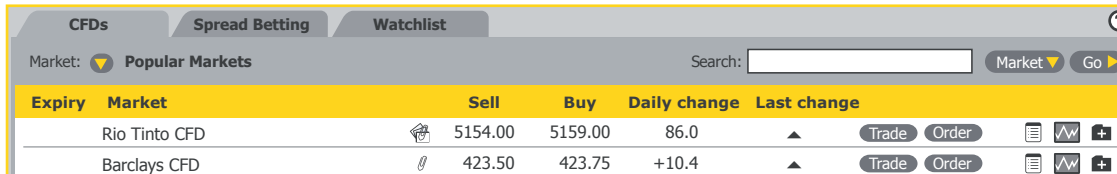
See more on Watchlists below.

Managing Watchlists

You can monitor your favourite markets with the use of the Watchlist tab.

Add markets to a Watchlist

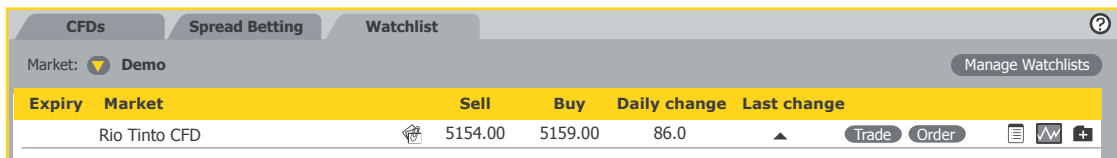
Simply add or remove a market by clicking on the Watchlist icon next to each market and assign it to the relevant Watchlist folder.



Expiry	Market	Sell	Buy	Daily change	Last change
	Rio Tinto CFD	5154.00	5159.00	86.0	▲
	Barclays CFD	423.50	423.75	+10.4	▲

Create a Watchlist folder

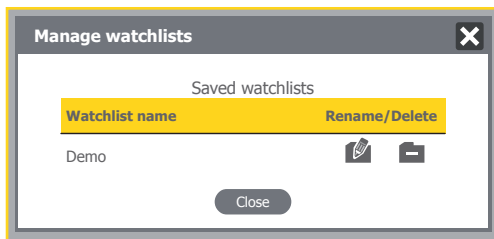
To create a Watchlist folder, click on the Watchlist icon and choose "New Watchlist" which will allow you to name your new Watchlist folder. You can create up to five Watchlists.



Expiry	Market	Sell	Buy	Daily change	Last change
	Rio Tinto CFD	5154.00	5159.00	86.0	▲

Manage Watchlists

You can rename or delete your Watchlist from the Manage Watchlists popup.



Tip

You can change the order of the markets in your Watchlist by clicking on a market and dragging and dropping it.

Watchlists can be renamed or deleted from the Watchlist tab. Click on the Manage Watchlist button in the top corner. This will open a popup that will allow you to rename or delete a Watchlist folder.

3. Deal ticket

You can place a Trade as well as place and edit Orders from the Deal ticket.

Placing a Trade

Step 1:

Once you have chosen the market you wish to trade in the Markets section, click on the Trade button.

Eg. CFD

Expiry	Market	Sell	Buy	Daily change	Last change
	Rio Tinto CFD	5154.00	5159.00	86.0	▲
	Barclays CFD	423.50	423.75	+10.4	▲

Eg. Spread Betting

Expiry	Market	Sell	Buy	Daily change	Last change
	Germany 30 Rolling Spread	6346.8	6348.8	-171.0	▼
	Wall Street Jun 08 Spread	12542	12554	+300	▼

The Trade ticket will then show the market with the Sell and Buy prices. These prices update in real time.

Eg. CFD


Eg. Spread Betting

Step 2:

Enter the quantity you would like to trade.

If you wish to attach a linked Stop or linked Limit to the Trade then enter these in the appropriate boxes. These are types of Orders and will be left to Our Quote, Good Till Cancelled (GTC).

If the market offers guaranteed Orders, you can tick the check box and enter the valid Stop. This will incur an extra fee. *For more on Orders see Order types.*

If the market offers an auto rollover facility, you can auto roll your position from the Deal ticket as well as by clicking on the "Set Auto rollover" icon  from the Open Positions tab in the Portfolio section.

Step 3:

To buy the market at the quoted buy price, simply click the Buy button.

To sell the market at the quoted sell price, simply click the Sell button.

Step 4:

The system will then process the request for a trade.

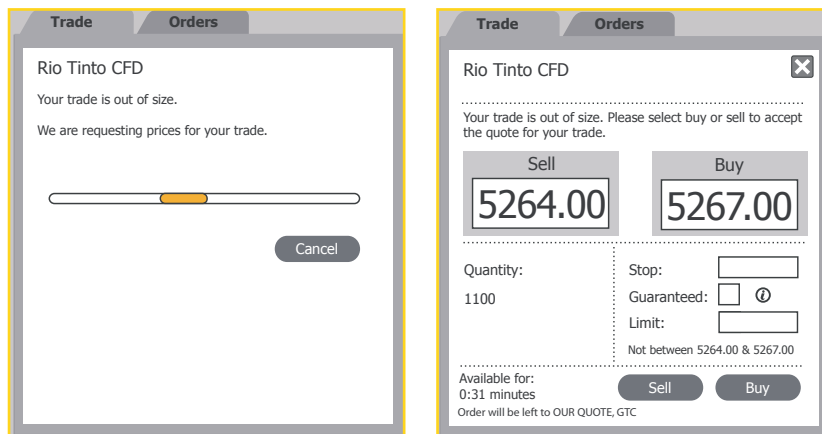
If it is successful, a Trade confirmation screen will appear. You are able to print this confirmation to keep for your records. Your new position will appear in the Open Positions tab in the Portfolio section.

If it is not successful, you will receive the relevant error message and error reference code explaining why the trade was not placed.

Quotes

If you enter a quantity greater than the maximum size set for a market then your request to trade will be sent to a dealer who will then send you a price back.

You then have the option to Buy or Sell at the given price in the quantity you have requested. The quote sent to you will be valid for a certain amount of time which is shown next to the Sell and Buy buttons.



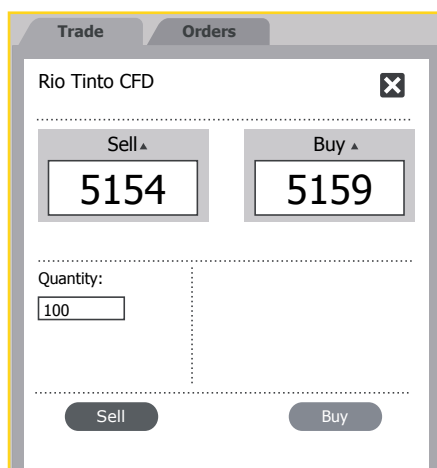
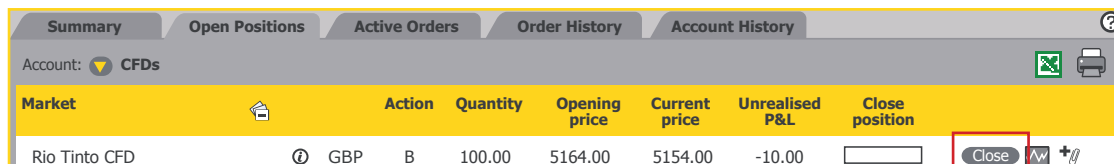
You can cancel the quote by clicking on the grey cross at the top of the ticket or by letting the quote expire.

Closing a Trade

You can close a Trade by fully closing it, partially closing it or attaching an Order to close. This functionality can be found in the Open Positions tab.

Fully close

Fully close the Trade by clicking on the Close button in the Open Positions tab. The quantity will automatically appear in the Trade ticket (this is editable if you decide to partially close your position). You can then click on the relevant Buy or Sell button and receive a Trade confirmation.



Partial close

Partially close the trade by entering the amount you want to close (less than the quantity currently open) in the box and clicking on the Close button in the Open Positions tab. This value will default in the Trade ticket. You can then click on the relevant Buy or Sell button in the Trade ticket and receive a Trade confirmation.

Market	Action	Quantity	Opening price	Current price	Unrealised P&L	Close position
Rio Tinto CFD	GBP B	100.00	5164.00	5154.00	-10.00	50

Trade Orders

Rio Tinto CFD

Sell ▲ 5154


Buy ▲ 5159

Quantity: 50


Sell Buy

Attach a closing order

You can also attach a linked Order such as a Stop or Limit Order to an existing trade to close it. This can be done by adding the linked Stop or linked Limit when you initially place the new Trade.

It can also be done by clicking on the "Place Stop & limit" icon  on the Open Positions tab to add closing Orders.

You will receive a confirmation screen with the relevant details shown under the attached Order section.

You can see that there is an Order attached as the icon now changes to "Amend Stop & limit" .

Placing an order

You are able to leave Orders for trades to be placed when markets reach designated trigger levels. Our online trading system gives you the facility to leave a variety of Order types. Orders can be linked to an existing Trade to close it or used to open a new position. We now offer the facility to set partial Orders, allowing you to determine the quantity as well as the price at which the Order should be placed.

At all times, the rules regarding Orders are governed by our Terms and Policies.

Orders can be placed in three ways on the Trading Platform:

- Deal ticket – Trade tab. Stop Losses and Limits can be linked to a Trade to close the Trade via the two appropriate boxes "Stop" and "Limit".
- Deal ticket - Orders tab. New Orders can be left on a market to buy or sell that market should a predetermined level be reached. Linked Orders can be attached to these by clicking on the "Stop & limit" button which allows you to add full or partial linked Orders.
- Portfolio section – Open Positions and Active Orders tabs can be used to add stops and limits and amend existing Orders.

Please note that if the Stop or Limit Order you have left close all or some of an already Open Position, then the linked Stop or linked Limit will be automatically deleted.

New Order via the Orders tab

Step 1:

Once you have chosen the market you wish to place an Order on, click on the Order button. The Order ticket will then show the market with the current Sell or buy prices.

Expiry	Market	Sell	Buy	Daily change	Last change
	Rio Tinto CFD	5154.00	5159.00	-86.5	▲

Step 2:

Select whether you would like your new Order to be a Sell or Buy.

Eg. CFD

Trade Orders

Rio Tinto CFD

Type: New order

Sell: 5154 Buy: 5159

Sell/Buy: Sell Buy

Quantity: Guaranteed: ⓘ

Price: not between 5137.00 & 5150.00

Good Until: End of day Cancelled Time

Eg. Spread Betting

Trade Orders

Wall Street Rolling Spread

Type: New order

Sell: 12541 Buy: 12545

Sell/Buy: Sell Buy

Quantity: £ p Guaranteed: ⓘ

Price: not between 12555 & 12559

Good Until: End of day Cancelled Time

Step 3:

Enter the quantity and the price you would like to open your position at. The price must be set a minimum distance away from the current Our Quote price, which can be determined using the not between values.

You can choose whether you would like your Order to be Guaranteed by ticking the checkbox. Guaranteed Orders incur an extra fee which can be seen in the Account History tab in the Portfolio section.

Step 4:

Select how long you would like us to work your Order for by using the relevant "Good until" setting. You have the option of Good until End of day (GFD), Good until Cancelled (GTC) or Good until Time (GTT).

Step 5:

You can attach full or partial If done/contingent Orders by clicking on the 'Stop and limit' button. For more on partial Orders see Adding If done/contingent Orders.

Step 6:

Press the Confirm button and the system will then process the request.

If it is successful, an Order confirmation screen will appear. You are able to print this screen. This new Order will appear in the Active Orders tab in the Portfolio section of the Trading Platform.

If it is not successful, you will receive the relevant error message explaining why the Order has not been placed.

Please note:

If you leave an Order working on GTC, GFD or GTT and the market expires, the Order will be deleted automatically.

GFD Orders are set to expire at the End of Day within the time zone of the market and not your local time zone. Thus if you leave an Order GFD on Monday, it will delete automatically at the End of day time set for that market.

Details of the trading hours can be found on the Market Information sheet popup when you click this icon .

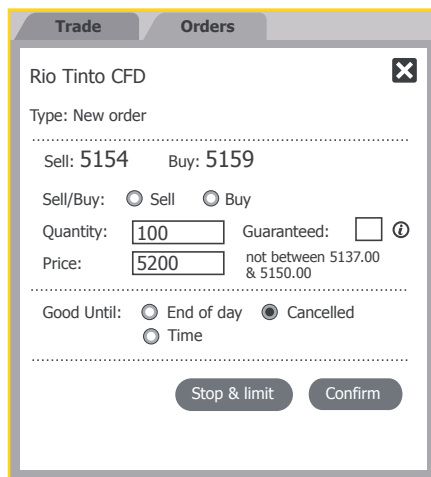
If you leave a GFD on UK 100 Daily Future Tue Spread and it is still Monday, this Order will not carry through to the following day; in this instance a more appropriate type of Order is GTT or GTC.

Adding If done/contingent Orders

If done/contingent Orders can be set via the Stop & limit button on the Orders tab. You can set full value contingent Orders or partial value Orders.

For example you want to set a new Order to buy

Follow Steps 1 to 4 in the "New Order via the Orders tab" section.



Rio Tinto CFD

Type: New order

Sell: 5154 Buy: 5159

Sell/Buy: Sell Buy

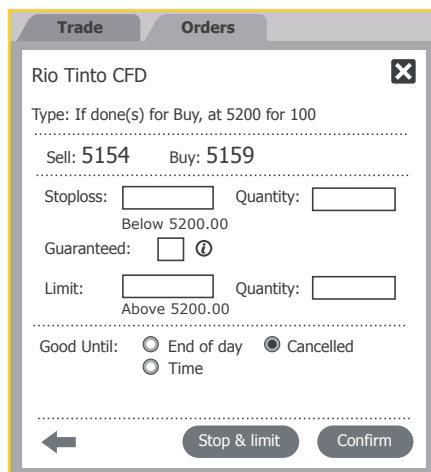
Quantity: Guaranteed: ⓘ

Price: not between 5137.00 & 5150.00

Good Until: End of day Cancelled Time

Step 5:

Click on the Stop & limit button which takes you to this screen. Enter in the price and a "full" or "partial" value.



Rio Tinto CFD

Type: If done(s) for Buy, at 5200 for 100

Sell: 5154 Buy: 5159

Stoploss: Quantity:
Below 5200.00

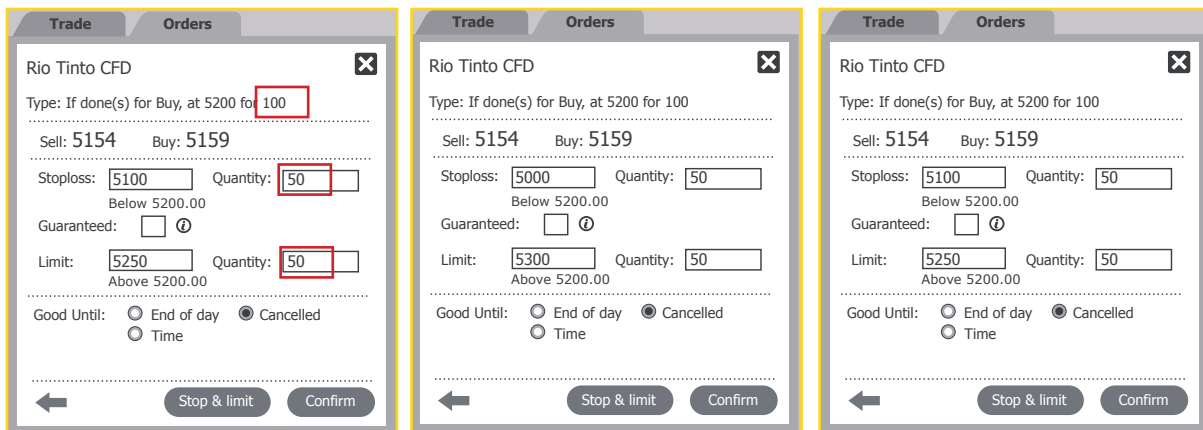
Guaranteed: ⓘ

Limit: Quantity:
Above 5200.00

Good Until: End of day Cancelled Time

For partial Orders, click on the Stop & limit button to take you to the next screen. You can toggle between screens by using the arrows.

When the partial quantities entered add up to the original Order quantity, the Stop & limit button will be disabled. You can set up to five iterations of the partial Order.



Step 6:

Press the Confirm button and the system will then process the request.

If it is successful, an Order confirmation screen will appear. You are able to print this screen. This new Order will appear in the Active Orders tab in Portfolio section of the Trading Platform. Orders with If done Orders attached will have "Yes" in the If done column.

Account: Spread Betting										
Date	Market	Order	If done	Type	GTD	Quantity	Order price	Current price	Distance away	
20/03/08	Rio Tinto CFD	Stop	Yes	GTC	No	B 100.00	5200.00	5132.00	68	
20/03/08	Rio Tinto CFD	Stop	No	GTC	No	B 100.00	5200.00	5132.00	68	

If it is not successful, you will receive the relevant error message explaining why the order has not been placed.

Amend an Order

Once an Order has been placed you then have the option to edit the details of this Order. All Orders, be they new or contingent Orders can be edited from the Active Orders tab by clicking on the "Amend Stop & limit" and "Amend open Order" icon

You can then edit the Order details via the Order tab and press Confirm.

Add an OCO Order

One Cancels the Other (OCO) Orders can be added via the Active Orders tab. This means that you can leave two separate new Orders in the same market so that if one of them is triggered and filled, the other is cancelled, thereby leaving you with one Open Position.

Click on the "Add OCO Order" icon , edit the Order details via the Order tab and press Confirm. OCO Orders can also have contingent Orders linked to them via the Stop & limit button.

Account: Spread Betting										
Date	Market	Order	If done	Type	GTD	Quantity	Order price	Current price	Distance away	
20/03/08	Rio Tinto CFD	Stop	Yes	GTC	No	B 100.00	5200.00	5131.00	69	
20/03/08	Rio Tinto CFD	Stop	No	GTC	No	B 100.00	5200.00	5131.00	69	
20/03/08	Barclays CFD	Stop	No	GTC	No	S 100.00	410.00	422.25	12.25	
20/03/08	Barclays CFD	Stop	No	GTC	No	B 100.00	410.00	422.50	27.5	

Deleting an Order

Orders can be deleted from the Active Orders tab.

Click on the 'Delete Stop & limit' icon

A warning message will popup to confirm that you want to delete your Order.

Order types:

Stop Order

A Stop Order is an instruction to buy or sell a market at a price which is worse than that prevailing at the time of placing the Order. If it is placed at the time of opening the position, or is added to an Open Position, it is called a Stop Loss. It can also be used to open a position if you think a market could move even higher once it moves above a particular higher level, or even lower if it moves lower than a particular level.

E.g.

If Our Quote for Australian 200 CFD is 5100/5106:

A Stop Order to Buy would be outside Our Quote and therefore placed higher than 5106

A Stop Order to Sell would be outside Our Quote and therefore placed lower than 5100

If you were long in the market and wished your position to be closed if the market went beneath 5000, then you would leave a Stop Loss Order linked to that position to Sell at 5000. If the price fell to 5000 (or lower) then the Stop would be executed and close that position. (Please note that market gapping may occur.)

If you felt that if the market traded up to 5150 and it would continue even higher, then you would leave a new Stop Order to Buy at 5150. If the Buy price hit 5150 or higher, the Order would execute and open a long position.

If that Open Position was closed by another Order triggering or because of an opposing trade then the Stop will automatically be cancelled.

(Please note if you had a short position currently open in that amount, this would close you out).

Limit Order

A Limit Order is an instruction to buy or sell a market when it reaches a price that is better than the prevailing at the time of the placing the Order. It can be used to take a profit on an Open Position when a market reaches a certain level. It can also be used to open a position if you anticipate a market price reversing.

E.g.

If Our Quote for UK 100 Rolling Spread is 5873.8/5879.8:

A Limit Order to Sell would be outside Our Quote and therefore higher than 5879.8

A Limit Order to Buy would be outside Our Quote and therefore placed lower than 5873.8

If you were long in the market and wished to take your profit when the market reached 5950.8, you would leave a linked Limit Sell Order at 5950.8, which would activate when the Sell price hit 5900 or higher. If activated, this Order would close your position and realize any profit (or loss if you opened your position above 5950.8.)

If you thought the market was going to reach 5700.5 and then reverse and go higher, and you had no Open Position in the market, you would leave a new Limit Buy Order at 5700.5. If the price reaches 5700.5 or lower than the Order is activated and you would have a new long position in the market.

If that Open Position was closed by another Order triggering or because of an opposing trade then the Limit will automatically be cancelled.

(Please note if you had a short position currently open in that amount, this would close you out).

Linked Stop Order Linked Stop Losses are Orders linked to Open Positions that will close the positions in Order to prevent further losses.

A Stop Loss Order is set at a price which, when reached, automatically triggers a trade to close your position. The closing trade is executed at the next available price immediately after the Order is triggered. This can be at the same, a better or a worse price than the specified level (the trigger level). In most cases, the Order is executed at the same price as the Stop Loss level but it is possible that the execution price is at a worse level (known as slippage) and in cases of severe gapping the execution price may be at a substantially worse price.

Linked Orders can only be attached to Open Positions.

E.g.


You place a trade to Buy 10 of Wall Street Rolling Spread at 12600 and you place a linked Stop Order against that position at 12500. If that Open Position is closed by another Order triggering or because of an opening trade then the Stop Order will be automatically cancelled.

Linked Limit Order Linked Limits are Orders to close Open Positions in Order to take profit.

Linked Orders can only be attached to Open Positions.

E.g.

You place a trade to BUY 10 of Australian 200 Mar CFD at 5500 and you place a linked Limit Order against that position at 5580. If that Open Position is closed by another Order triggering or because of an opening trade then the Limit Order will automatically be cancelled.

Guaranteed Orders A Guaranteed Stop Loss Order guarantees that you will obtain the Stop Loss trigger value that you set (thereby protecting your Order against any potential gapping or slippage in the market), whereas a Stop Loss will trigger at the best available price. There is an additional charge for this type of Order known as the Guaranteed Stop Loss premium with minimum distances that Orders must be placed away from the current price. Guaranteed Stop Losses are not available on all markets. For further information please refer to the Market Information Sheets by clicking on this icon 

You cannot add or amend Guaranteed Orders when the market is closed or the market is available by 'Phone only'.

Clients who have a Limited Risk Account will automatically have a Guaranteed Stop Loss Order placed on each Trade.

If done Orders If done Orders are contingent Orders that are activated once the original Order has been executed. These are placed via the Order tab in the deal ticket.

If done Orders are linked to a position, therefore if your original Order has an If done Order attached to it, and that original Order closes all or part of a position, then that part of the If done Order will cease to exist.

One Cancels Other (OCO) One Cancels the Other (OCO) Orders can be placed to ensure that if one Order is filled, the other Order is cancelled.

This means that you can leave two separate new Orders in the same market so that if one of them is triggered and filled, the other is cancelled, thereby leaving you with one Open Position.

OCO Orders can also have contingent Orders linked to them via the Stop & limit button.

Good until end of day (GFD)	<p>The Order will remain working until the end of the day.</p> <p>Good until end of day expires at end of day of that Market. If the market is 24-hour, it will expire at a set time which is shown in the Market Information Sheets. For example US markets close at 5pm so if traded in Australia it will close at 10am Australian time.</p> <p>If the market is not 24-hour, it will expire at the end of trading for that market.</p>
Good until Cancelled (GTC)	<p>The Order will remain working until you cancel it.</p>
Good until Time (GTT)	<p>The Order will remain working until a specific date and time.</p>

Important Information about Orders

There are some important considerations regarding Orders, all of which are contained in our Terms and Policies.

- All Orders are set to Our Quote and Good until Cancelled unless otherwise stated. Our Quote means that Orders will not be triggered or filled until Our Price moves to the level nominated (unless the market gaps).
- Orders Aware Margining applies when using a Stop Loss based on Our Quote.
- Market gapping is where the market trades through a level specified by the client in an Order. Market gaps are common during times of volatility. Guaranteed Orders protect against gapping.
- Orders which are left to open a position are subject to normal credit procedures. If an Order to open were to result in additional margin being required, the trade may not be opened at the absolute discretion of City Index. Equally, it may not be possible to move Stop Loss Orders, at the absolute discretion of City Index, if this were to result in a margin call.
- Stop Loss Orders and linked Orders are attached to a particular trade, so that if the trade is closed online or on the phone any Stop Loss or linked Order attached to it will be cancelled. It is important to note that all other Orders including Stops will be executed independently regardless of whether the effect is to open or close a position.
- Stops, Stop Losses and Limits could be subject to market gapping, whereby a market opens through the level of your Order, or trades through the level of your Order without trading at your level, resulting in your Order being filled at the gapped through level.
- Orders are only monitored and executed during City Index market trading hours (not necessarily underlying market trading hours). In the case of markets which continue to operate outside of City Index hours (e.g. 24-hour markets such as Indices, FX), we will execute any triggered Orders at the first available price in our opening hours which may be substantially different to the Order level. However, if the market has moved beyond the trigger level and returned by the time that City Index re-opens, the Order will not be executed.

4. Portfolio section

Summary

The summary tab gives you a summary view of Cash balance, Unrealised P&L, Net equity and Margin for each currency held on the account with an overall summary.

Currency	Cash	Unrealised P&L	Net equity	Margin
CAD	82.00	-45.00	37.00	198.40
USD	-3211.04	-40111.00	-43322.04	76975.33
GBP	99701.97	-2158.20	97543.77	1823.46
AUD	-18.70	0.00	-18.70	0.00
Total	98093.71	-22629.37	75428.68	41252.06


Open Positions


The Open Positions tab allows you access to multiple functions which will be further explained below.

Market	Action	Quantity	Opening price	Current price	Unrealised P&L	Close position
UK 100 CFD	GBP B	17.00	5630.3	5495.3	-2295.10	Close
GBP/USD (per 0.0001) CFD	USD B	8.00	2.0288	2.0201	-696.00	Close
Wall Street CFD	USD B	205.00	11978	11782	-40380.00	Close
Whitbread CFD	GBP S	50.00	1190.00	1212.00	-10.99	Close
Gold Spot CFD	USD S	4.00	999.1	1022.4	-932.00	Close
USD/CAD CFD	CAD B	10000.00	1.00	0.9921	-90079.00	Phone only

If you have a CFD and Spread Betting account, you can filter the details using the Account dropdown.

Use the column sort function to view your trades by Market, Currency, Action, Quantity, Opening and Current price as well as Unrealised P&L.

Any multiple trades in the same contract will be displayed as one amalgamated position with an average price. You can see which market has amalgamated trades as they will have this icon 

To view each individual trade on that specific market, click on the  icon which will then drill down to display your other trades.

When your positions are amalgamated:

Market	Action	Quantity	Opening price	Current price	Unrealised P&L	Close position
UK 100 CFD	GBP B	17.00	5630.3	5495.3	-2295.10	Close

When your positions are shown individually:

Summary									
Open Positions									
Active Orders									
Order History									
Account History									
Account: CFDs									
Market		Action	Quantity	Opening price	Current price	Unrealised P&L	Close position		
UK 100 CFD		GBP B	17.00	5630.3	5485.5	-2461.70	<input type="text"/>	Close	
		B	2.00	5600.0	5485.5	-229.00	<input type="text"/>	Close	
		B	1.00	5600.0	5485.5	-114.50	<input type="text"/>	Close	
		B	14.00	5636.8	5485.5	-2118.20	<input type="text"/>	Close	

Key to icons:



Amalgamated position



Un-amalgamated (expanded) position



Rollover tip that shows you further details about your Open Position/Order



View tick chart:
View charts by clicking on the graph icon. This will open a popup with a historical chart of the market.



Order attached to a trade:
This is shown next to amalgamated positions to show that there is a Stop or Limit attached to a trade.



Place Stop & limit:
This icon shows that there are no closing Orders currently attached to your Open Position. Place a closing stop/limit Order on your position by clicking on this icon.



Amend Stop & limit:
This icon shows that there are already closing Orders attached to your Open Position. Edit a stop/limit Order currently on your position by clicking on this icon.



Delete open Order:
Click on this icon to delete the Order.



Set auto rollover:
This icon shows that the trade can be rolled over automatically on the last trading day. Click on this icon to enable rollovers on your position.




Remove rollover:
This icon shows that the trade is set to roll over – click on this icon to remove a rollover attached to a position.


Please note: Auto rollover is not to be confused with rolling contracts which roll at the end of each day. This function applies to all monthly and quarterly contracts and allows you to specify if you would like your trade to rollover when it expires. This means that your original trade will close, realising any profit or loss, and a new position is opened in the following tradable contract on the last trading day.

Close Open Positions in the same contract in any Order you wish. Either click on the close button or enter a quantity and click close to partially close your trade. These will then be shown on the trade ticket which you will need to confirm.

Tip

Hover over icon for tool tip

View more information about the trade by clicking on the information icon.  This will give you details on the date the trade was opened and the trade reference number.

View graph about the market by clicking on the graph icon  This will open a popup with a tick chart of that market.

Active Orders

View any opening and/or closing Orders you may have. Amendments to any working Orders can be made here, however the system will not allow you to move a closing Order so far away that it puts you on margin call.

To find a particular Order more easily, you can sort Orders by Date, Market, Order (Stop or Limit), Type, GTD (Guaranteed), Buy/Sell, Quantity and Distance away.

Key to icons:

Amend Stop & limit:

Edit a stop/limit Order currently on your position by clicking on this icon.



Add OCO Order:

Add a One Cancels Other Order to a current active Order by clicking on this icon.



Remove OCO Order:

Remove a One Cancels Other Order from a current active Order by clicking on this icon.



Delete Stop & Limit:

Click on this icon to delete the Order.

Order History

This tab allows you to view a history and status of the Orders placed.

Filled

This details the execution price at which the Order was filled.

Cancelled

This details the date the Order was cancelled.

Account History

This tab allows you to view a history of your trades as well as any cash flow that has gone through your account. You can access more history by clicking on the Access more history link in the bottom left-hand corner. From here you can print this history and export it into an excel spreadsheet.

B. Account Tab

From this tab you are able to do the following:

- View statements and contract notes
- Fund your account
- Withdraw funds
- Change your password
- Update your personal details
- Set your preferences

C. Research Tab

From this tab you are able to view the following:

- Charts – Charts with 70 customisable technical indicators
- News – View real-time news and search for news by instrument and asset class.
- Economic calendar – Track economic announcements with forecasts and actuals.
- Market profile – View the prices and volumes traded on a market.